

iQ parts
IQ-PARTS-SHOP.COM



**SPECS &
INFORMATION**

Smart® Band Flex 13mm (1/2") Manual Fitting Tool Part No. SM-FT-2000-13-FX

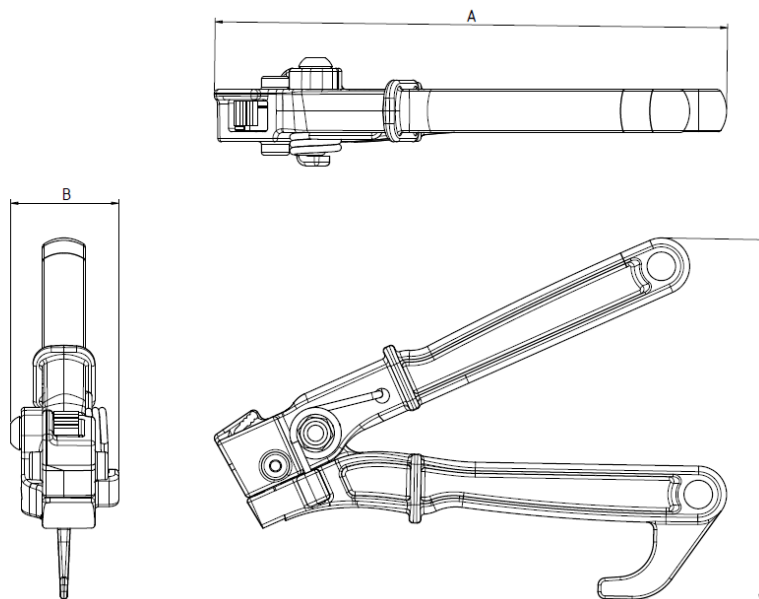


Description

Manual Fitting tool to tighten the Smart® Band Flex 13mm (1/2") strapping product. Tool suitable for onshore and offshore use. Can be used subsea. One hand use only.



Outline Dimensions (General Tolerance $\pm 5\text{mm}$)



General Properties		
Property	Value	Unit
Weight	0.24 (0.53) $\pm 2\%$	kg (lb)
Length (A)	215 (8.46)	mm (inch)
Width (B)	45 (1.77)	mm (inch)
Height (C)	152 (5.98)	mm (inch)

Mechanical



Expected Tensions ¹								
Product	Size/Width mm (inch)	Material	Max System Force ² (During Tightening)			Min Retention Force ² (After Tightening)		
			N	kgf	lbf	N	kgf	lbf
Smart® Band Flex 13mm	13 (0.51)	PP (Polypropylene)	TBC	TBC	TBC	TBC	TBC	TBC
		POM (Acetal)	1000	102	224	400	41	90
		PA12 (Polyamide 12)	TBC	TBC	TBC	TBC	TBC	TBC
		PPS (PolyPhenylSulphide)	TBC	TBC	TBC	TBC	TBC	TBC

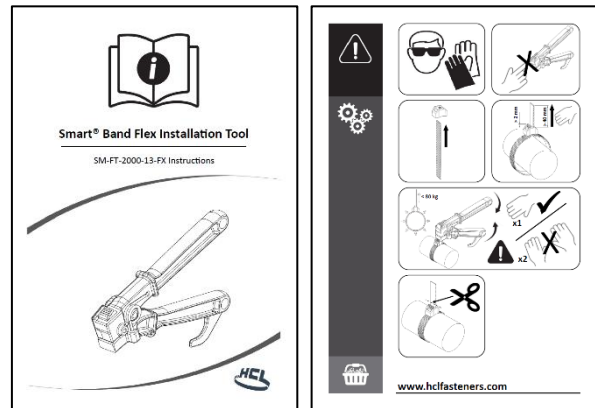
¹The system retention gives an idea of the expected retention or tension during and after tightening using a Smart® Band installation tool (part number SM-FT-2000-13-FX) around a 100mm steel pipe and depends on how much force the user can apply. Surface friction and the capstan effect may produce different results. Tool operated using one hand only as per recommendation.

²The final retention force has been measured on a 100mm diameter steel pipe. This figure may be lower for smaller diameters, or higher for larger diameters.



Further Operating Details, including tool setup, maintenance and parts list can be found in the following booklet:

- SM-FT-2000 Banding Tool Instructions



Important Notice to User

Storage: In offshore or corrosive environments tool should be washed with clean water and dried. Store in a cool dry area in original carton.

Warranty: HCL warrants that all products when stored, used and maintained in accordance with HCL's written instructions will meet or exceed the above specification. HCL makes no other warranties or conditions, expressed or implied, including, but not limited to, any implied warranty or condition of merchantability or fitness for a particular purpose or any implied warranty or condition arising out of a course of dealing, custom or usage of trade. If any HCL product does not conform to this warranty then only replacement or refund of the affected parts will be considered.

Limitation of Liability: Except where expressly prohibited by law, HCL will not be liable for any damage or loss arising from the use of the HCL product.

Product Use: It is the user's responsibility to determine the suitability of the product for the task it is to be used for. HCL reserve the right to continually improve its product and would advise the user to contact HCL at all times to ensure they have up to date current data to work with.



info@iq-parts.nl
Harsweg 34A
2461 EZ Ter Aar
T +31 252 624 126
The Netherlands